

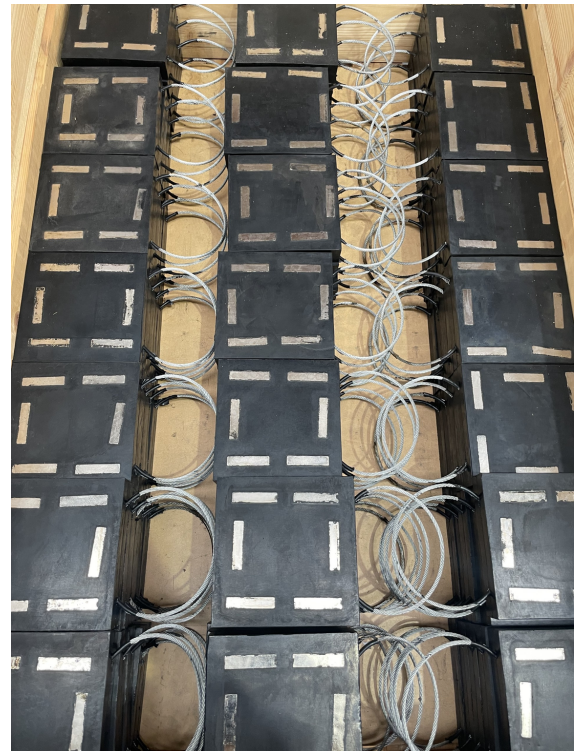
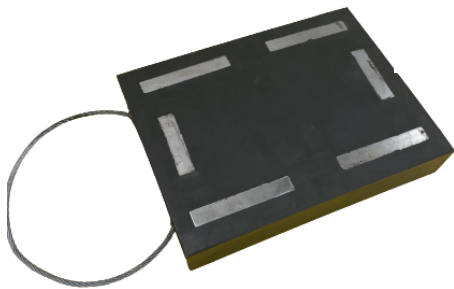
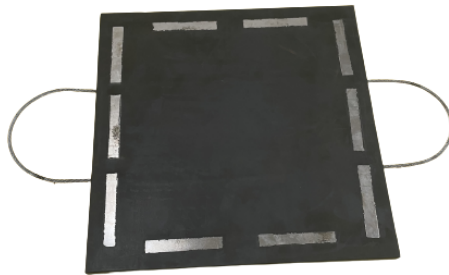
## Magnetic Patch Liners

Requiring no bolts, the magnetic patch liners consist of a high strength magnet bonded with a high performance matrix of our abrasion resistant rubber compounds. Magnetic patch liners were originally conceived to be placed to plug any unexpected holes or leakages in chutes, hoppers, bins, deflector plates etc

When unexpected holes develop in equipment, the magnetic patch is simply placed over the location of the hole to stop excess spillage and to prevent further damage to equipment by providing a hard wearing physical barrier. The magnetic patch liners are a simple yet effective solution for quick temporary repairs. The ceramic magnet is encased in pre-engineered wear-resistant mining rubber & the handle is pre-molded for ease of installation and removal.

### Benefits Include:

1. Easy Application
2. Eliminates downtime
3. No need for permits
4. Tools not required



**Available in the below sizes:**

**38mm x 165 x 165mm**

**38mm x 318 x 318mm**